

# **Brilliant Dual USB HDD External Enclosure**

**3.5" USB to Two Bay IDE External Hard Disk Enclosure**



## Copyright Statement

It is a criminal offence, under applicable copyright laws, to make unauthorized copies of copyright-protected material, including computer programs, films, broadcasts and sound recordings. This equipment should not be used for such purposes.

**Notice:** The manufacture makes no warranty of any kind with regards to this material, including, but not limited to, the implied warranties of merchantability and fitness for a particular product.

The manufacture shall not be liable for errors contained herein or for incidental consequential damages in connection with the furnishing, performance, or use of this material.

Every effort has been made to ensure that the information in this manual is accurate. The manufacture is not responsible for printing or clerical errors.

Mention of third party products is for information purposes only and constitutes neither an endorsement nor a recommendation. The manufacture assumes no responsibility with regards to the performance of these products.

This document contains proprietary information, which is protected by copyright (see below). The information contained in this document is subject to change without notice.

## Trademarks:

Microsoft is a registered trademark of Microsoft Corporation. Windows, Windows 95 and the Windows 98 logo are trademarks of Microsoft Corporation. IBM is a registered trademark of International Business Machines Corporation. NDAS® and XIMETA™ are trademarks of XIMETA, Inc. All other trademarks and product names used within this manual are the property of their respective companies and are hereby acknowledged.

**Copyright:** © 2005 all rights reserved. No part of this publication may be reproduced, transmitted, transcribed, stored in a retrieval system, or translated into any language or computer language, in any form, by any means, without prior written consent of manufacture.

## FCC Compliance Statement

This device complies with Part 15 of the FCC Rules. Operation is subject to the following two conditions:

1. This device may not cause harmful interference, and
2. This device must accept any interference received, including interference that may cause undesired operation.

## FCC Warning Statement

This equipment has been tested and found to comply with the limits for a Class B digital device, pursuant to Part 15 of the FCC Rules. These limits are designed to provide reasonable protection against harmful interference in a residential installation. This equipment generates, uses and can emit radio frequency energy and, if not installed or used in accordance with the instructions, may cause interference to radio communications. However, television reception interference can be determined by turning the equipment off and on. The user is encouraged to correct the interference by one or more of the following measures:

- Reorient or relocate the receiving antenna
- Increase the separation between the equipment and the receiver
- Connect the equipment into an outlet different from that to which the receiver is connected
- Consult the dealer or an experienced radio/TV technician for help.

## CAUTION

Changes or modifications not expressly approved by the party responsible for compliance could void the user's authority to operate the equipment.



## Table Of Contents

---

<b>INTRODUCTION</b>	3
<b>FEATURES</b>	3
<b>PACKAGE CONTENTS</b>	3
<b>SPECIFICATION</b>	3
<b>SYSTEM REQUIREMENTS</b>	4
<b>HARDWARE INSTALLATION</b>	4
<b>SYSTEM SETUP</b>	7
USB CONNECTION	7
A. Hardware	7
B. Drivers Installation	7
Windows 98SE	7
Windows Me / 2000 / XP	9
Mac OS	9
C. USING THE DEVICE	10
Connect the drive to computer	10
Disconnect the drive from computer	10
Windows 98SE	11
Windows Me / 2000 / XP	11
Mac OS	11
<b>PARTITION THE EXTERNAL HARD DISK</b>	11
A. Partition under Windows 98/Me	12
B. Partition under Windows 2000/XP	15
C. Partition under Mac OS	15
<b>LIMITED WARRANTY AND SERVICE</b>	16

**Note:** Brilliant Dual is not guaranteed to work properly on every computer due to the motherboard USB compatibility issue and is not responsible for any loss arising out of using Brilliant Dual.

All specifications are subject to change without notice

## **INTRODUCTION**

Congratulations on your purchase of the Brilliant Dual 3.5" USB HDD External Enclosure, the most convenient way to save two hard disk in one external HDD enclosure and the JBOD mode built in to provide combine two hard disks into one hard disk drive automatically for computer O.S. recognized while each of the two hard disk physical capacity over 128G Bytes.

From the built in low noise cooling fan and stylish anodized aluminum case, the Brilliant Dual provide user a perfect long time operation environment of the hard disk, due to the quick dissipation of the heat from the anodized aluminum case and the low noise fan to keep continues air flow and low temperature operation, so no matter the hard disk spindle speed and how much heating is generate from the hard disk, you just need to operate the Brilliant Dual as usual.

The Brilliant Dual 3.5" USB HDD Enclosure interface is fully compatible with USB 2.0 specification and IDE hard disk interface. It converts any 3.5" PATA (IDE) hard disk drive into a 480M bits/sec-USB 2.0 Hi-Speed connection to computer, plug & Play and hot swappable.

The Brilliant Dual 3.5" USB HDD Enclosure provides you the perfect and easiest way to add extra storage to your laptop or desktop computer.

## **FEATURES**

- Ideal for 3.5" PATA (Parallel ATA) hard disk drive and saved two hard disk in one external enclosure
- Support JBOD; combine two hard disks into one hard disk drive automatically for computer O.S. recognized while each of the two hard disk physical capacity over 128G Bytes
- Attractive anodized aluminum case for hard disk drive temperature excellent heat-dissipation
- Low noise fan built in to keep continues air flow and low temperature operation.
- Converts up to two 3.5" PATA hard disk drive into Hi-Speed USB 2.0 external hard drive enclosure
- Hi-Speed USB 2.0 transfer rates up to 480M bits/sec
- USB 1.1 and USB 2.0 compatible
- Plugs & Plays and be hot-swappable
- Attractive blue LED indicates for power and red LED for hard disk activity
- Easy horizontal or vertical placement, no needs any extra stand support

## **PACKAGE CONTENT**

- One Brilliant Dual 3.5" USB HDD External Enclosure
- One 3 feet A-male to B-male USB2.0 cable
- AC/DC 12V/5V Dual External Power Supply with power cord
- Driver for Windows 98 SE CD
- User's Manual

## **SPECIFICATION**

- Interfaces: USB 1.1/2.0
- Support 480Mbps High Speed and 12Mbps Full Speed USB operation
- Built in power and HDD active LEDs
- Case material: Aluminum, and electrode plate plastic front and rear covers
- Weight: 20.82 Oz./ 590g (Not include hard disk drive)
- Dimensions: 8.55" L x 4.80" W x 2.6" H  
217mmL x 122mmW x 66mmH
- Environmental:
  - Power Requirements: 110-220 VAC, 50-60 Hz, 12V/2A, 5V/2A
  - Operating Temperature: 5 °C to 50 °C
  - Storage Temperature: -40 °C to 70 °C
  - Operating Humidity: 5 to 90%, non-condensing

## **SYSTEM REQUIREMENT**

### **PC Requirements**

- Minimum Intel Processor II 350MHz, 64MB RAM
- USB 2.0: Windows 98SE/ME/2000/XP
- USB 1.1: Windows 98SE/ME/2000/XP
- Computer must have proper port or PCI card

### **Mac Requirements**

- Minimum Apple G3 processor (G4 for 1394b), 64MB RAM
- USB 2.0 equipped Mac; Mac OS 10.2, 10.3
- USB 1.1 equipped Mac; Mac OS 9.1, 9.2, 10.1.5, 10.2, 10.3
- Computer must have proper port or PCI card

## **HARDWARE INSTALLATION**

**Note:** Before you install the hard disks to the enclosure, please set the jumpers of your hard disks to the “Master” and “Slave” mode, and the one of the two hard disks which set to “Master” mode will be recognized by the computer O.S. the first one “Mass Storage Device” which can be recognized. The jumpers setting way of your hard disk please check the label printing of the hard disk.

1. The connector and switch placement of the back panel



USB      Cooling      DC      Power  
Port      Fan      Input      Switch

2. Using cross type screw drive unlock the screw (counter clockwise) then open the back of the enclosure by sliding the tray out from the aluminum housing.



3. Remove the power and HDD active indicate LED



4. Connect the IDE connectors to the HDD



5. Connect the 4 pin power connectors to the HDD



6. Position the HDD in the tray so that the mounting holes on the HDD line up with the tray mounting holes.



7. Using the mounting screws to secure the HDD in the tray.



8. Gently insert the tray into the enclosure aligning the guide rail with the grooves of the enclosure housing.



9. Before fully inserting the tray, connect the power and HDD activity LED wires to the 3-pin connector and be careful to adjust the wires length while insert the tray to the aluminum housing.



10. Insert the tray the rest of the way into the housing and secure the tray faceplate to the enclosure using the screws provided.



11. Connect the round end of the DC power cord to the back of the enclosure. Rotate it, if necessary, to ensure it is correctly aligned with the enclosure's power port.



12. Plug the AC cable into the AC-DC power adapter, and the plug the AC cable into any available AC outlet.



13. Turn on the power button and verify that the LED illuminates behind the logo on the front of the enclosure.

**NOTE:** Most problems occur due to driver problems on the Host Card side!



## **SYSTEM SETUP**

Before connect your external storage enclosure, please:

- Make sure your PCI Host Card is installed correctly
- Double check that the Host Card driver is up to date
- If needed, update your Operating System or BIOS
- For better heat sink and performance, do not cover the Enclosure and leave enough room around it
- Never expose the product to water or humid conditions
- Always check for visible damage and defects of power and interface cables before using

**NOTE:** If the system doesn't recognize the drive, turn on the power first, before connecting the USB cable.

## **USB CONNECTION**

### **A. Hardware-**

1. Boot-up your computer into the operation system, make sure the USB / USB2.0 port device driver has installed and available in operation system.
2. Plug the AC power cord to the inlet of your Drive and power on the drive.
3. Plug the port connector of the USB cable into the USB Port of your Drive.
4. Plug the port connector of the USB cable into USB port of computer.
5. Your drive will be ready to use.
6. Follow the Software Installation for the next.

**NOTE:** In order to reach USB 2.0 speed, you must have a computer or host adapter card that has USB 2.0 support. This device will auto sense the speed of your USB port and adjust between USB 1.0 and USB 2.0 speed.

### **B. Drivers Installation-**

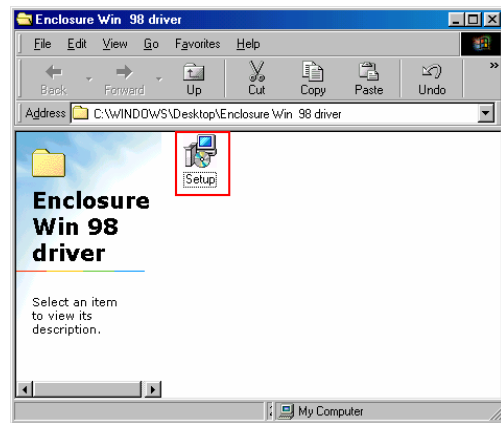
Windows 98SE

**NOTE:** If you want your external hard disk drive can be recognized by Windows 98SE then you must format the hard disk in **FAT32** file format.

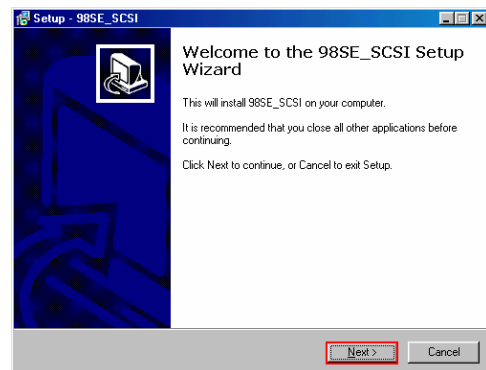
1. Boot-up your computer into the Windows 98SE, if your computer built in USB 2.0 host port or have USB 2.0 host add on card, please **make sure the USB host port driver has installed and available** in windows 98SE.



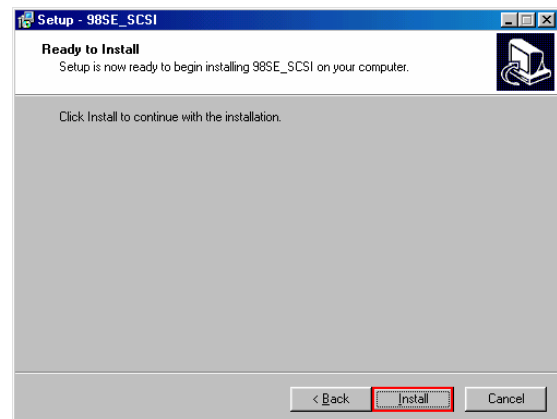
2. IF this is the first time you plug the device into the USB port of computer, please check the **[CD-ROM drive]**, insert the device driver CD into your CD-ROM drive, locate the Windows 98 driver's folder of the driver CD and double click on the folder to get in the folder then double click on the "Setup" icon to execute the driver installation.



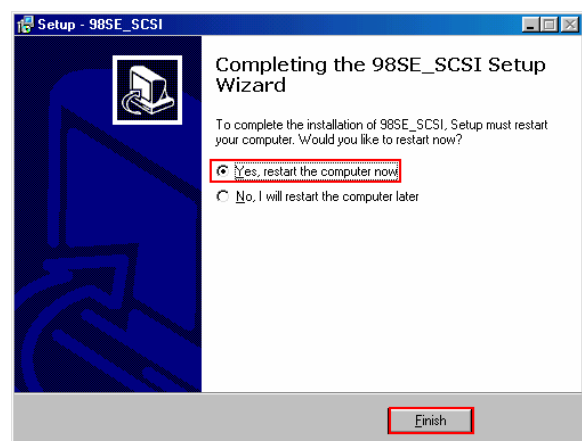
3. Click on **[Next]**



4. click on **[Install]**



5. After the needed files are copied into your system, check the "Yes, restart the computer now" then click on **[Finish]** to restart your computer.



6. Boot-up your computer into the Windows 98SE and till ready, plug the port connector of the USB cable of USB2.0 enclosure into the USB port of computer.
7. After the system install the link driver. Double click on **[My Computer]**, a new drive letter is added or the all of the new drive letter will pop-up automatically; it is the Removable Mass Storage Device which just installed.

**NOTE:** If the new drive doesn't appear in My Computer, it means this drive is a whole new hard disk drive which doesn't contain any partition; please refer to the Partition the External Hard Disk chapter to prepare your USB2.0 Hard Disk.

If computer does not detect the USB device, please check as below:

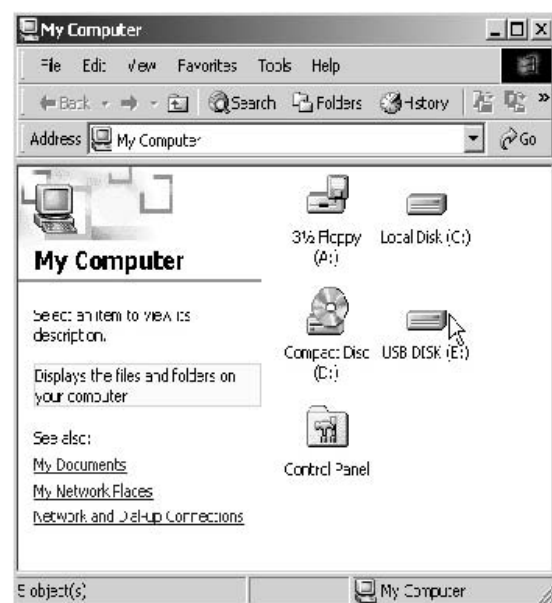
1. USB host driver Re-installation
2. Re-install enclosure drive
3. VIA chipset patch

### **CAUTION!!**

If you execute the VIA chipset patch and your main board does not use a VIA chipset, you may cause serious damage to the computer's CMOS. Make sure you know what kind of chipset your main board has by checking your computer manufacturer's website or manual.

Windows Me / 2000 / XP

1. If you are plugging the USB External Drive into your computer for the very time, system will detect USB2.0 Storage Device and install the driver of **[USB Mass Storage Device]** from system files **automatically**.
2. After the system installed the driver of USB mass storage device. Double click on **[My Computer]**, a new drive Disk is added in a few seconds, it is the drive which just installed



Mac OS

- A. This drive is supported by the Mass Storage Support 1.3.5 in Mac OS. You don't

need to install any drivers.

**B. Mac OS 8.6**

If you are using Mac OS 8.6, the software of Mass Storage Support 1.3.5 is required to install. You can download The USB Mass Storage Support 1.3.5 from the Apple Software Updates web site <http://www.apple.com/support> .

**C. Mac OS9.0 or later**

You don't need to install this software if you have installed Mac OS 9.0 or above. When you plug this USB Hard Disk into the USB port of your Mac computer, the mass storage volume should appear on the desktop in a few seconds automatically.

**NOTE:** This drive is supported by Mass Storage Device in WIN Me/2000/XP system directly. You don't need to install any drivers. If the external hard disk is a whole new disk drive which doesn't contain any partition, please refer to the **Partition the External Hard Disk chapter** to prepare your USB2.0 external disk.

**C. Using the Device**

After the first time installation, you can connect or disconnect the drive without power off the computer, please follow the steps when you want to do the actions above:

***Connect the drive to computer***

1. Plug the port connector of the USB cable into the USB Port of your drive.
2. Plug the port connector of the USB cable into the USB port of computer. Plug the AC power cord to the INLET of your External drive and Turn on the power switch on your USB2.0 External Drive.
3. Drive is ready for use immediately.

***Disconnect the drive from computer***

Windows 98SE

Please visit the web site as below to update your Windows 98SE; The update installs a Safe Removal utility that allows you to safely stop a Plug and Play storage device prior to physically unplugging the device.

[http://www.microsoft.com/windows98/downloads/contents/wurecommended/s\\_wufeatured/1394/license.asp](http://www.microsoft.com/windows98/downloads/contents/wurecommended/s_wufeatured/1394/license.asp)

1. Double click the green Unplug or Eject hardware icon in system tray and select the device that you want to remove and click on [Safety Remove].

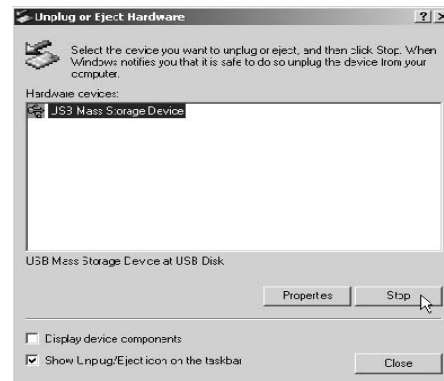


2. When the system prompts '**Confirm device to be stop**', click on [OK]. When the green Arrow Icon is disappeared, plug out the USB cable from the USB port of computer.



#### Windows Me/2000/XP

1. Double-click on the [**Unplug or Eject Hardware**] icon in system tray. Dialog box appears as right.
2. Highlight the [**USB Mass Storage Device**] in the dialog box, click on [**Stop**], choose the USB2.0 External Drive that you want to disconnect, then click on [**Stop**] again on next screen.
  - A. Wait for few seconds, the system prompts "**You may safely remove this device**". Plug out the USB cable from the USB port of computer.



#### Mac OS

When disconnecting your drive from computer, close all windows and quit all running applications that are stored in the USB2.0 External Drive and drag USB2.0 External Drive's icon into "**Trash**" to dismount it from the Desktop prior to unplugging the USB2.0 External Drive from the USB port.

### **CAUTION!!**

**Do not plug out the USB2.0 External Drive from the USB port of your computer or HUB while copying files to or from the device or while files or applications stored on the USB2.0 External Drive are in use.**

**DOING SO MAY RESULT IN LOSS OF DATA.**

### **PARTITION THE EXTERNAL HARD DISK**

### **CAUTION!!**

*Before you partition your hard disk, please be aware that this will destroy all your existing data on the drive, so make sure you have a backup! This step is usually only required the first time you install a factory new hard drive, if you change the format or*

*want to erase all data on your drive.*

**NOTE:** If you can not see the drive, make sure the jumper settings of your hard drive are correct, the drivers are installed and the power is turned on!

If you use Win2000 or WinXP and FAT32, the biggest single partition you can create will be 32GB. To create larger partitions, you need to use the DOS command under Win98SE or WinME or change to NTFS format.

Mac OS does not recognize NTFS formatted drives, to use your device on both platforms, we recommend you using FAT32 format.

#### A. Partition under Windows 98/Me

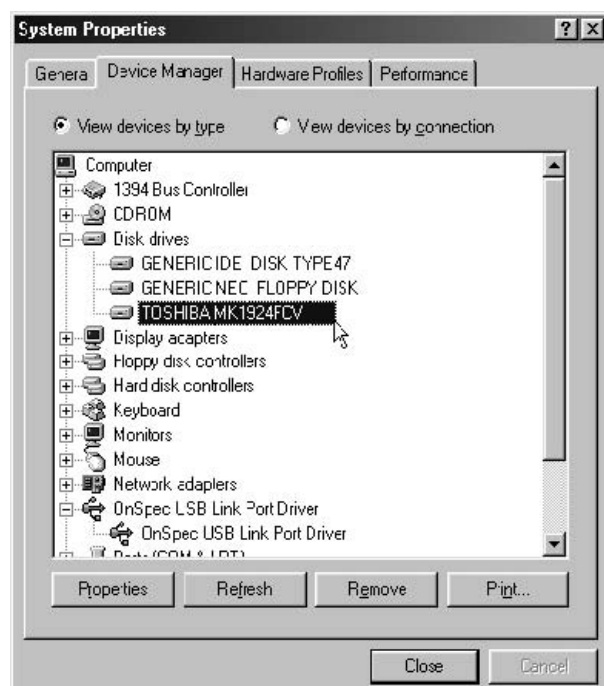
**NOTE:** Win98/SE and WinME do not recognize NTFS formatted drives, so if you want to use your drive on those platforms, we recommend you to use FAT32 instead. If you use this device to backup your data using a 3rd party software running MS-DOS, we recommend you to format the drive using FAT32.

Boot-up the computer into Windows 98/ME system. Plug your external hard disk drive. There are two methods to partition and format your external hard disk drive. (Here we are using the USB2.0 external hard disk setting as the example)

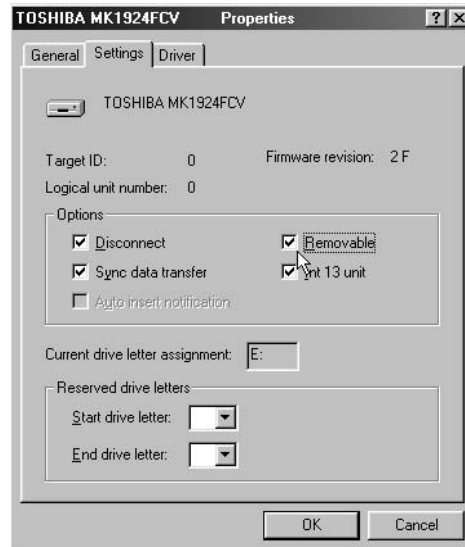
##### Method 1.

**Step1.** Click on [start], choose the [control panel] in [setting], double click [system] and open [hard disk]. A screen appears as right.

**Step2.** You can see the USB2.0 hard Disk you just add. High light the USB Hard Disk and choice the [property], select [setting], setting the USD2.0 Hard Disk to [removable]. A screen show as right.



**Step3.** After restarting the system, a removable HDD is added to **[My Computer]**. Choose the removable HDD and right click the mouse. Select the **[format]** to format your USB2.0 Hard Disk Drive.



**You only can set the Hard Disk Drive to one partition in this method.**

## Method 2

**Step1.** Go into the MS-DOS mode by click on **[Start]**, choice the **[MS-DOS Prompt]** in **[Programs ]**

**Step2.** At the DOS prompt, type **[FDISK]** and press Enter.

**Step3.** If FDISK quit without any message, back to the Windows 98 screen, plug out the USB2.0 Hard Disk, re-boot computer , plug in USB2.0 HDD again and go back to step 1 to proceed.

**Step4.** In the first screen of FDISK, answer the question:

**Do you want to enable large disk support?**

**[Y]** If you want to build a partition larger than 2GB.

**[N]** If you want to build a partition small than 2GB.



**Step5.** The next screen is **[FDSIK OPTIONS]**, and type “5” to select disk. The screen show as right.

**IMPORTANT:** you must type **[5]** in this screen to change the current fixed disk drive to build partition, the default fixed drive set by FDISK is your internal hard disk, if **you don't change the fixed disk drive to the USB2.0 Hard Disk, the data of your internal hard disk will be destroyed.**

**Step6.** In the **[Change Current Fixed Disk Drive]**, type the disk drive number that assigned to the USB2.0 Hard Disk

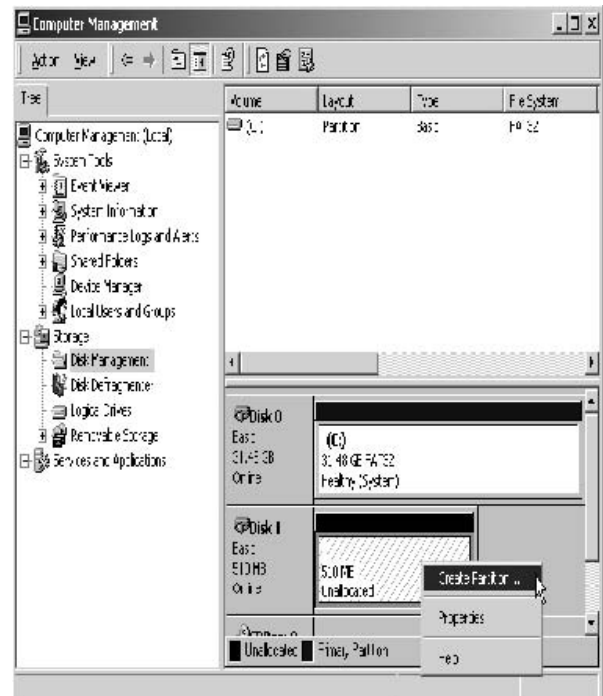
**Step7.** Back to **[FDISK OPTIONS]** screen, Now you can create or delete the partition of the USB2.0 Hard Disk.

**Step8.** After you finish FDISK, back to the Windows screen, plug out and plug in USB2.0 Hard Disk again to activate these changes. Double click on [My Computer] icon, the USB2.0 Hard Disk Drive that you already partitioned will appear.



## B. Partition under Windows 2000/XP

**Step1.** To partition the USB2.0 Hard Disk Drive under Windows 2000, please plug The USB2.0 Hard Disk , then click on **[Start]**, choice the **[Control Panel]** in **[Settings]**, open **[Administrative Tools]** , double click **[Computer Management]**. A window appears as right.



**Step2.** Click on **[Disk Management]** on the left part of this window, all connected disk drives will be listed in the right part. Find out the USB2.0 Hard Disk that you add. On the right of disk # is the status of the partitions of this disk drive, you can create a new or delete an exist partition by right-click on this area.

**Step3.** Right-click on the right area of USB2.0 Hard Disk Drive, click on **[Create Partition....]** The “**Create partition wizard**” will appear.

**Step4.** Following the instructions of wizard to partition and format your USB2.0 HDD.

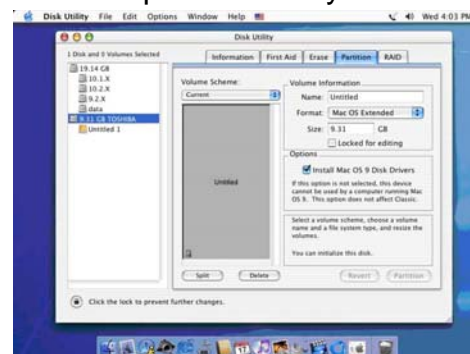
**Step5.** *Now, you have built a partition in the drive.*

## C. Mac OS

Mac OS9.2 and earlier, does not support creating partitions on an external drive. To do that, you would need to purchase additional 3<sup>rd</sup> party software. Initializing is no problem on all Operating Systems.

Mac OS X, use the Disk Utility to format and create partitions on your external disk.

- Select “Disk Utilities” in the utilities folder
- Choose your external drive and format it according to your requirement



## **LIMITED WARRANTY AND SERVICE**

Your product is warranted to be free of defects in materials and workmanship for a limited period of time from the date of purchase. Please refer to your product's packaging for specific warranty information. You may also search online for your product's specific warranty information. In the event of a defect during the warranty period, we will replace the defective product when it is returned by the Purchaser. This limited warranty will be considered void if the unit is tampered with, improperly serviced, has its security seal removed or is subject to misuse, negligence or accidental damage. This Warranty is limited to replacement of the defective product only and shall not cover any other damages. Any product returned to us that is not defective in materials or workmanship will be returned to the Purchaser at the Purchaser's expense. With respect to the use of this product, in no event shall the Company be liable for any loss of profit or any other commercial damage, including but not limited to special, incidental, consequential and other damages or costs incurred.

This Limited Warranty does not apply to damage that occurs during unpacking, setup, or installation; removal of the Product for repair; or reinstallation of the Product after repair.

### **OBLIGATION OF PURCHASER:**

- The original purchase receipt from an authorized dealer must be retained as proof of purchase before warranty service will be rendered.
- In order to obtain warranty service, the Product must be delivered with a Return Merchandise Authorization (RMA) number (any packages without this RMA Number will be refused).
- Detailed description of the problem and a copy of the receipt.
- Freight pre-paid to our RMA Center, in proper packaging (to avoid shipping damage).

We are not responsible for late, lost, or misdirected packages.

Under no circumstances do we offer any refund(s) for products purchased. Any return for refunds(s) should be discussed with your authorized dealer prior to the purchase of goods. The replacement product will be returned to owner, freight pre-paid via UPS Ground only, within 30 days of receipt. Any other method of shipping (FedEx, Certified Mail, etc.) will be at the Purchaser's expense.

Please include: Name, Address, E-mail, Phone, Product Part #, Place Purchased, Date Purchased, description of the problem, a legible copy of your sales receipt

**ANY SHIPPING, CUSTOMS, TARIFFS COST, ETC. TO OR FROM OUR CUSTOMERS OUTSIDE THE CONTINENTAL U.S.A. IS SOLELY THEIR RESPONSIBILITY.**